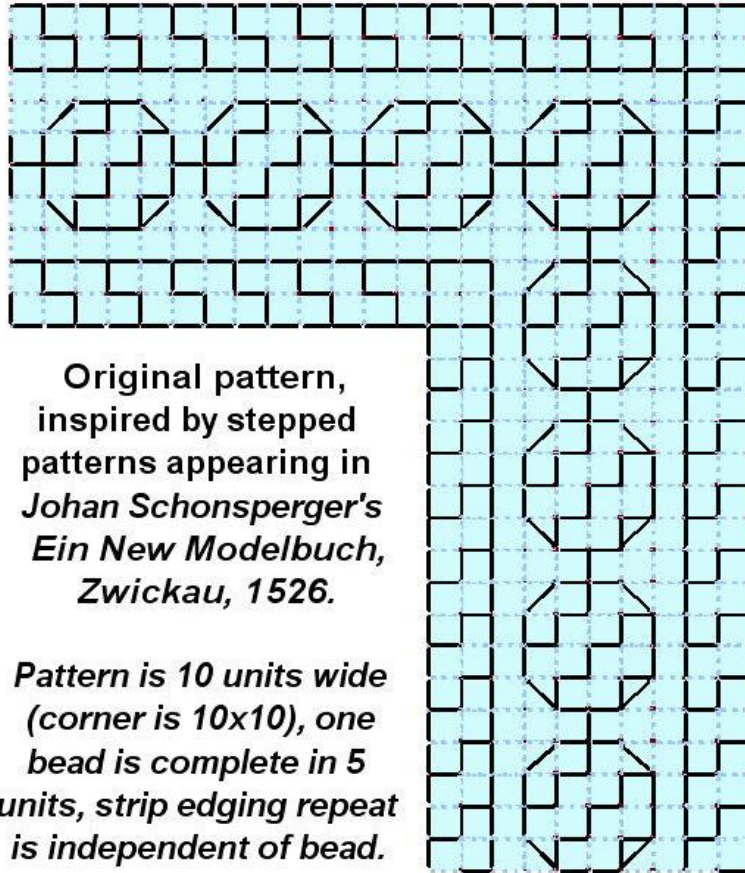


BEAD BORDER WITH CORNER

A chart for counted embroidery

© Kim Salazar, 2006, 2012; <http://www.string-or-nothing.com>



This original pattern is a simple elaboration of a design appearing in my book *The New Carolingian Modelbook*, © 2005 – on plate 55:6. The stitched sample below shows some variants of the stepped mini-border corner treatments.

