

KUREOPATORA'S SNAKE SCARF

A knitting pattern

© Kim Salazar, 2005, 2012; <http://www.string-or-nothing.com>



Here's a slight skew on the Entrelac concept. Knit with a long repeat multicolor, using ribbing that draws in, you can achieve a very nifty play of colors and movement with very little effort. This pattern was originally posted on String-or-Nothing as part of a regular blog post in October 2005. It's gone viral, and has been knit by an amazing number of people all over the globe, using all sorts of long repeat yarns.

I played a long time with the final section, trying out several ways to do it that preserve the look of the ribbed sections that went before, because the usual way of ending off an Entrelac section lost the directionality of the ribbing. My corners don't exactly match, but that's because the entire piece has a definite beginning and end. If you were to work this idea like a seaman's scarf, with a center third of

plain ribbing, and both ends worked out from that ribbing, they would match exactly. Perhaps that's the next step, provided I find a suitable yarn in a color set I like.

I make no claim as to inventing this concept. Entrelac is pretty standard. I've seen recipes for it going back to instructions for sock tops printed in the 1890s or so. Nor is doing it in a narrow strip unique. Quick searches on the Web will surface lots of other people's experiments with directional knitting and narrow scarves. And I certainly can't lay any claims to ribbing, or to using long repeat multicolor yarns in a narrow scarf. However, I can claim the serendipity that happened when I played with all of these concepts together. The trumpet like manner in which the ribbing spreads and curves is (to me at least) both amusing and graceful, and

Kureopatora's Snake Scarf

presents a different effect than working this idea in garter or stockinette stitch. I did work out the ribbed treatment for the final end, and have provided my own graph for it.

As far as using this with other yarns since the Kureopatora is now long gone – I suspect that Noro Silk Garden or Kureyon would work nicely, as would some of the Daikeito yarns. What you want is a yarn in which each individual color lasts for about a yard (or more) before shading into the next one. The glorious hand-painted yarns that are hand-dyed in skeins that are about a yard around would NOT produce this wide stripe effect. They'd be lovely, but the color sections would not be long enough to make dramatic stripes like Kureopatora's.

Just to annoy the natural-fiber-only crowd, I do observe that the yarn for this project needn't be a top-drawer luxury product. There are some very inexpensive acrylics that have exceptionally long color repeats. I'm not fond of working with them in general, but if you're thinking of knitting a rugged scarf for a little kid, those yarns might be worth considering.

Materials

- US #6 needles
- Anticipated yarn consumption for this size: About 250 yards of a multicolor worsted weight yarn that normally knits in stockinette at 5 stitches per inch.

Gauge and Dimensions

Gauge for this project, taken over 1×1 ribbing, at the midpoint of a section where it isn't particularly stretched out: approximately 6 stitches (3 ribs) per inch

- 30 stitches at widest point
- Width of scarf: about 4.25 inches. Length of scarf: about 58 inches.

Instructions

As for working method, this scarf is done in a pretty standard Entrelac edge column technique – think Entrelac project reduced to just the right and left most columns, without the basket weave effect sections between.

- **Row 1:** Cast on 1 stitch, knit in the front, then purl in the back of this stitch [2 stitches on needle]
- **Row 2:** Knit in the front, then purl in the back of the first stitch, K1 [3 st on needle]
- **Row 3:** Purl in the front, then knit in the back of the first stitch, P1, K1 [4 stitches on needle]
- **Row 4:** Purl in the front, then knit in the back of the first stitch, P1, K1, P1 [5 stitches on needle]

- **Row 5:** Knit in the front, then purl in the back of the first stitch, finish row in established K1, P1 ribbing [6 st on needle]
- **Row 6:** Knit in the front, then purl in the back of the first stitch, finish row in established K1, P1 ribbing [7 st on needle]
- **Row 7:** Purl in the front, then knit in the back of the first stitch, finish row in established P1, K1 ribbing [8 st on needle]
- **Row 8:** Purl in the front, then knit in the back of the first stitch, finish row in established P1, K1 ribbing [9 st on needle]

Continue rows 5-8, adding one stitch in each

Row but doing it to maintain the K1, P1 rib pattern. Keep doing this until you have 30 stitches on your needle.

Entrelac Body Section:

- **Row 1:** Knit in the front, then purl in the back of the first stitch, SSK. Turn work over so the next row heads back in the other direction. Note that this first row is only 3 stitches long.
- **Row 2 and all subsequent even numbered rows:** Work P1, K1 ribbing as established.
- **Row 3:** Purl in the front, then knit in the back of the first stitch, P1, SSK. Note that from now on this row-ending SSK will be composed of one stitch worked on the previous row, plus one stitch from the dormant stitches on the left hand needle. Turn work over so the next row heads back in the other direction. You now have 4 stitches in the row.
- **Row 5:** Knit in the front, then purl in the back of the first stitch, K1, P1, SSK. Turn work. You now have 5 stitches in the row.
- **Row 7:** Purl in the front, then knit in the back of the first stitch, P1, K1, P1, SSK. Turn work. You will now have 6 stitches in the row.

Continue to work in the manner of rows 5-8, adding one stitch at the edge of each right-side row in the established rib pattern until you have incorporated all of the dormant stitches on the left hand needle. You will again have 30 stitches on the needle. At this point your segment is done. To do the next one, flip the work over (the and begin again from Row 1 of the Entrelac section). Continue adding entire trumpet shaped sections until your scarf is of sufficient length. (Mine maxed out at about 58").

Final section:

- **Rows 1-25** – work as for a standard Entrelac section. At the completion of Row 25 you should have fifteen active stitches on your right hand needle. The left hand needle should hold the other fifteen stitches. Work Row 26 as usual (marked in blue on accompanying chart).

Kureopatora's Snake Scarf

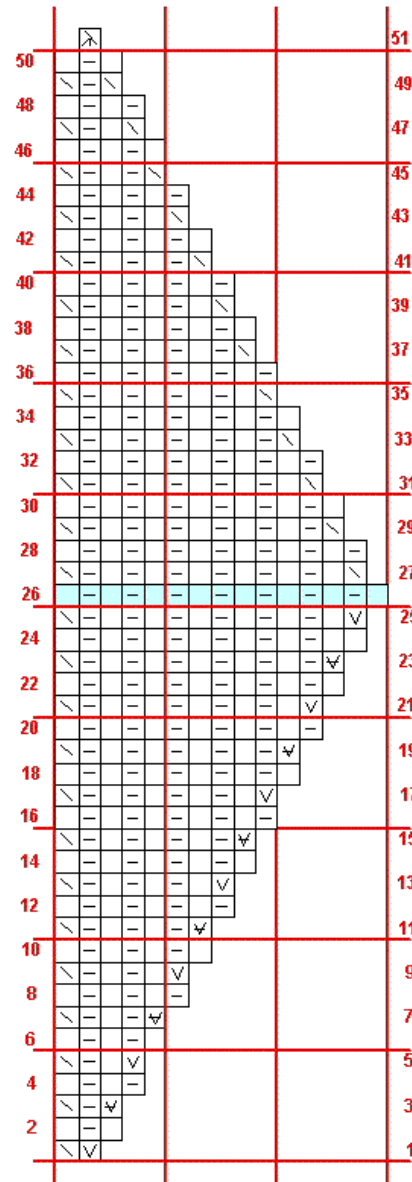
- **Row 27 and all subsequent odd numbered rows:** SSK, work in established ribbing, ending row with SSK and turn in the same manner as in the Entrelac section. Rows 28 and all subsequent even numbered rows: Work P1, K1 ribbing as established.

Continue in this manner until you have completed Row 50, and three stitches remain on your needle.

- **Row 51:** Slip, slip, slip, knit all three stitches together through the back of the loop (this is a three-stitch variant of the standard two stitch SSK decrease).

Darn in all ends.

Final section for Kureopatra's Snake Entrelac Scarf



Rows 1-26 are identical to the corresponding rows in the Entrelac sections in the body of the scarf.

- Knit on odd rows, purl on even rows
- Purl on odd rows, knit on even rows
- Knit in the front, then purl in the back of the first stitch
- Purl in the front, then knit in the back of the first stitch
- SSK
- SSSK