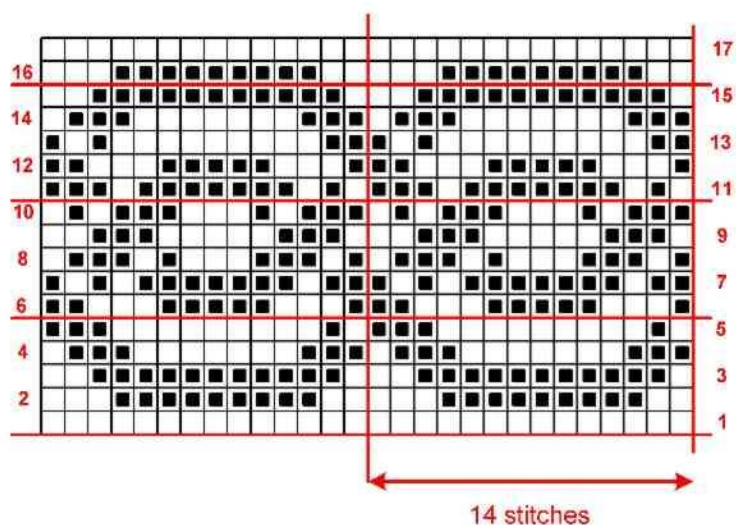


MYSTERY INTERLACE

A graphed pattern

© Kim Brody Salazar, 2004, 2012; <http://www.string-or-nothing.com>



I'm not quite sure where I picked up this interlace. It was in my circa 1980 notebooks – the same ones in which I collected patterns that went on to feed my early booklets, and later, *The New Carolingian Modelbook*. However, there is no notation there on exact source.

At the time, I was graphing from reproduction modelbook pages, mostly harvested from early book collections produced on microfiche, available at area university libraries. There are lots of examples of this type of interlace in historical works, but none graphed up at exactly this unit count. And to date I've not encountered this knotwork, at this count, again - not in an age of digging through ever more available primary sources.

I suspect that given this pattern's simplicity, I doodled this one up on my own, informed by but not copied from the original sources.

I've used this one in knitting but not embroidery. Yet. I would have no problem accepting this on a historically inspired piece aiming at reproducing the aesthetic of a time ranging from the 1490s through the mid-1600s. A lot though would depend on the medium or style of needlework chosen.