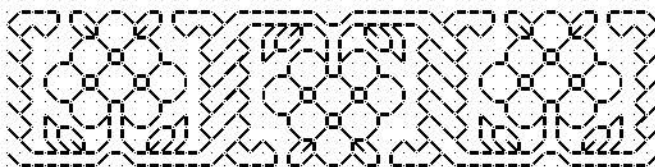
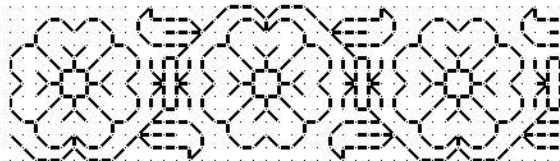
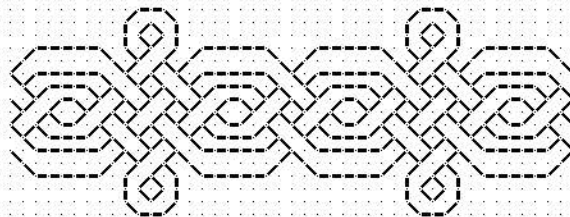
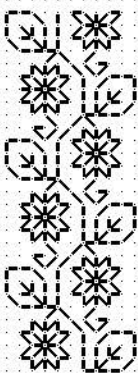


Patterns from and/or inspired by 16th and 17th century historical sources. Complexity and difficulty increase from left to right. Suitable for counted thread embroidery using double running stitch or back stitch.



Simple Blackwork Patterns - Workshop Handout
West Warwick Public Library, 16 June 2018
(c) Kim Salazar - <http://string-or-nothing.com>

