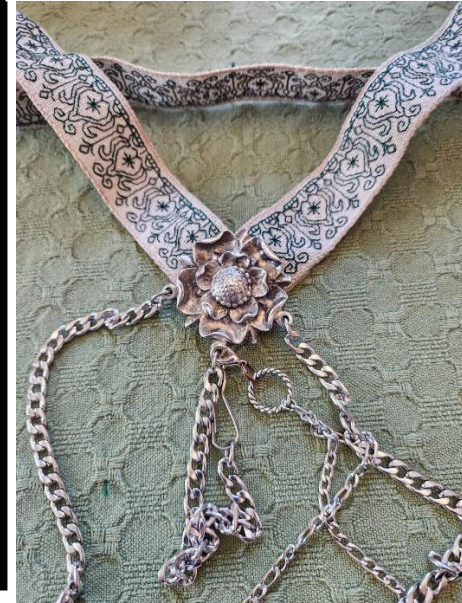
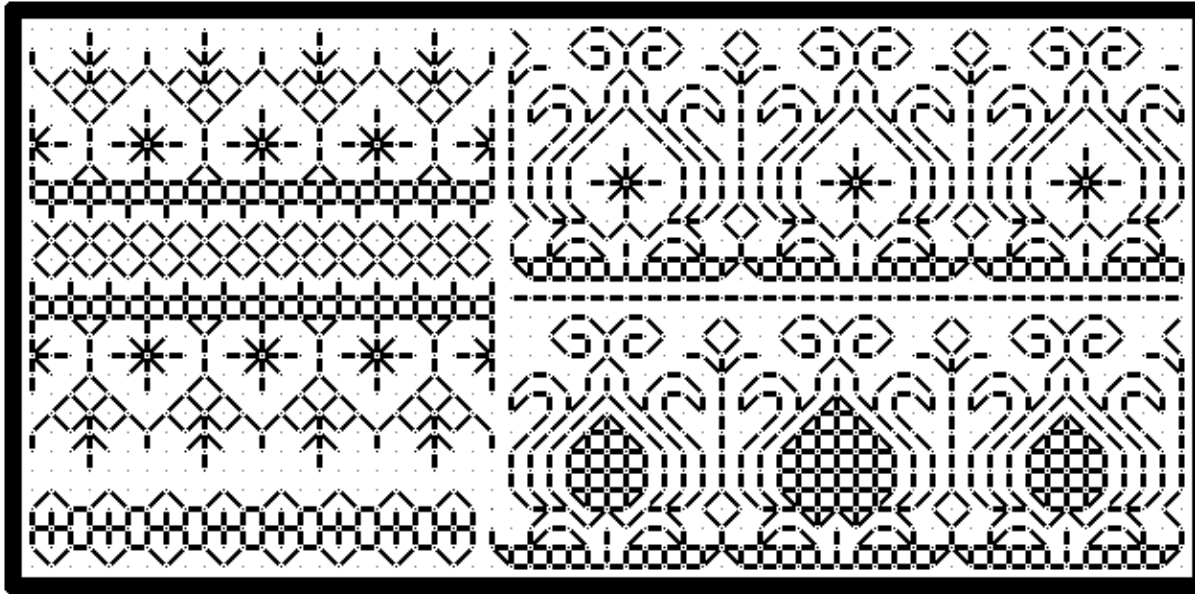


Ribbon Band Doodles

Original design notes prepared for my chatelaine ribbon project, Winter 2024



These doodles are what happened when I sat down to create a new band pattern to adorn the around-the-neck ribbon I needed for the stitcher's chatelaine I received as a present this holiday past. It's a wonderful convenience, keeping all needed tools to hand. But fully loaded, the chatelaine pin can put stress on garments. So I decided to make a special ribbon on which to wear it.

I went stash-diving and came up with a heavy linen evenweave ribbon, bought at the old Sajou store in Paris during our trip there several years ago. Saved for special need, I had found one. I did settle on the version at the upper right. Folk wanting a more traditional pomegranate look might like the one below it. The ribbon is 17 units wide, so my design is 15 units north-south. That leaves one unworked unit between the stitching and the ribbon's pre-finished edge.

As ever, I offer this as good-deed-ware. If you use this, please pay it forward by assisting someone else, or making the day a bit brighter for a friend, family member, acquaintance, or stranger. And also as usual, if you want to use any of these patterns for commercial purposes, either for combination into a new published design work, or to produce for sale or donation (especially in quantity) please contact me before doing so. But please feel free to use it as you wish for your own private enjoyment.